

Answering The Call



UNITED WAY OF SOUTHWESTERN PENNSYLVANIA

2017

REPORT TO THE COMMUNITY



Dear Friends,

What if you felt so alone, you didn't know where to turn? What if you were hungry, in jeopardy of losing your home, your heat, your dignity? What if you returned home after serving your country and felt lost? What if your child had all the potential in the world and no resources to realize it?

These are the problems facing many people in our community, but there is an answer. United Way of Southwestern PA is answering the call. By mobilizing thousands of volunteers, donors, corporate and community leaders across Allegheny, Westmoreland, Fayette and Southern Armstrong counties, we are fighting for the health, education and financial stability of everyone in our community. We are truly helping people and our whole community.

The successes captured in this 2017 Annual Report are a result of the hard work and generosity of our agency and corporate partners, donors, and volunteers. We thank you for working with us to answer the call.

Bob Nelkin
President and CEO
United Way of
Southwestern Pennsylvania

Karen Larrimer
Board Chair
United Way of
Southwestern Pennsylvania



**United Way of
Southwestern Pennsylvania**

United, we have improved thousands of lives in our community



165,336

hard-working, low-income families including veterans and women in crisis, were helped to improve financial stability, prevent hunger and homelessness, and provide access to basic needs, help to overcome financial hardship, and assistance to secure employment.



167,669

children were served through United For Children initiatives, including programs to improve health, mentoring to keep kids on track and prepared for high school, improved reading proficiency and school readiness, and increasing attendance rates among kids so they can be successful in school.



26,716

people with disabilities were served by mobilizing businesses to pilot innovative efforts and champion policies that improved job finding skills and confidence, access to housing for greater independence, and self-advocacy to improve opportunities and possibilities for young people with disabilities.



24,512

seniors and their caregivers were served through United For Seniors to avoid loneliness and isolation, provide a helping hand so they could stay safe in their own homes, prevent costly nursing home care and receive respite services (caregivers) to improve stress levels and quality of life.



Helping Hard-Working Families Gain Access To A Better Life

We answer the call through programs that work to prevent hunger and homelessness among our most vulnerable families including women in crisis and veterans. We support programs that provide basic needs assistance, increase pathways to financial health, and improve employment.

2017 Highlights



\$16.8M

United Way's Volunteer Free Tax Prep initiative helped over 10,000 low-income hard-working families receive \$16,836,917 in federal refund dollars, helping them better provide for their families, keep food on the table, and avoid crisis.



79,000

PA 2-1-1 Southwest responded to more than 79,000 calls, texts, and chats, helping to connect people in need with resources to prevent hunger and homelessness, avoid utility shut-offs, and more.



2,200

United For Women served over 2,200 women in crisis to help them transition to permanent housing, secure employment, improve financial stability, and more.



636

Using data from 2-1-1 to document the need, United Way worked with partners to develop Westmoreland County's first Cold Weather Shelter. In its first full year of operation, the Cold Weather Shelter provided 636 nights of emergency shelter to 53 children, families, and individuals at risk in the winter months.



Who You Help



“My mom said a different son came home from the service.”

What happens when a veteran returns home feeling lost? To watch how a call to PA 2-1-1 helped Sheldon, visit bit.ly/2AhSYk7



“I needed to get my life in order.”

Stephen was couch-surfing when a friend told him about Union Mission, a men’s shelter and United Way partner program in Westmoreland County.

Stephen entered Union Mission’s 120-day supportive housing program. The four-month program is designed to motivate and encourage the residents, while helping them learn how to maintain a self-sufficient lifestyle, build community and grow spiritually. “The way the staff and community embraced my story and came together to help meant so much to me,” Stephen said. “The program made me stronger.”

After completing the program over the summer, Stephen is now employed and is working on obtaining his Associate’s Degree in information technology. He now has his own apartment. Someday he hopes to continue his education and bring light to the stigma of homelessness.



Building Character, Resilience And Academic Success For Our Children

We answer the call by helping children build a strong foundation for success through programs that prevent children from falling behind or dropping out. We do this with programs that develop caring relationships, offer positive role models, and reinforce the importance of staying in school and living a healthy, active life. Our work builds critical academic and social/emotional skills to equip children for success in school, work, and life.

2017 Highlights

80%



80% of students in United Way's Be A Middle School Mentor program reported that the program helped them learn about the importance of school. A University of Pittsburgh study reported the program produced successful outcomes including improved attendance, improved grades and greater understanding of career pathways. See the full report at bit.ly/2nqCxx6.

7,000



United Way, in partnership with Children's Hospital of Pittsburgh of UPMC and Alliance for a Healthier Generation, grew the HOST program (Healthy Out Of School Time) from 12 sites to 70 sites, serving over 7,000 students. HOST aims to provide nutrition education and expand programs that offer physical activity to encourage healthy lifestyles for our community's children.

82



Westmoreland County piloted a volunteer-led initiative with employees from corporate partner ABB Inc. and 82 kindergarten students in the Mount Pleasant Area School District. Volunteers read high-quality books and facilitated projects with the students. Books were provided to each child to build at-home libraries. ABB Inc. also raised nearly \$2,500 in much needed classrooms supplies. Project expansion in 2018 will include 75 additional first graders.



Who You Help



“I want to be able to succeed and then come back and help.”

What happens when a young girl's ambition is greater than her self-confidence? To see how United Way's Be a Middle School Mentor program helped Amber'Nay, visit bit.ly/2i4vtAw



“When you have a passion for these kids, you can make a difference.”

Angela loves helping kids. And in her position as a Healthy Out-of-School Time (HOST) site coordinator for the YMCA at Phillips Elementary School and Whittier Elementary School, that's exactly what she does.

The HOST program is a partnership between United Way of Southwestern PA's fitUnited initiative, Children's Hospital of Pittsburgh of UPMC and other local agencies, including The Alliance for a Healthier Generation. The initiative strives to teach children at after-school programs the importance of living a healthy lifestyle.

Through the HOST program, students participate in fun activities, focus on homework, enjoy a healthy snack, and participate in some physical and educational activities. “Our program is helping kids get away from screen time and junk food,” Angela said.



Helping People With Disabilities Achieve Greater Independence

We answer the call through initiatives that help people with disabilities make a successful transition to adult life to promote greater independence and participation in the community. Our programs are creating connections to meaningful employment, housing opportunities for greater independence and social connection, providing support to caregivers, and advocating for policy change that improve opportunities for people with disabilities and their families.

2017 Highlights

250,000



Social media reached a quarter of a million people through the #IWanttToWork self-advocacy campaign to bring about a second piece of legislation that will help young adults with disabilities gain competitive employment and educate law-makers and the general public about the abilities of individuals with disabilities to succeed in the workforce. Social media has helped to reach and mobilize 1.25 million people over the lifetime of the #IWanttToWork campaign.

5,000



In response to the stress and concern parents have over the future for their children with disabilities when they are no longer able to provide care, United Way helped more than 5,000 family caregivers access practical information and tools to plan for the future of their loved one with a disability.

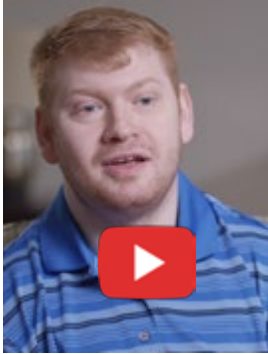
1,055



1,055 job-seekers with disabilities received assistance to find competitive employment. Of those, 134 found a job at one of the seven employers who have become champions for United Way's Career Transition Project. These seven business leaders have made a focused commitment to fill their open positions with more individuals living with disabilities in a variety of jobs and skill levels.



Who You Help



“It’s nice to have people who care for you and want you to succeed.”

How can a young man see his abilities instead of disabilities? To watch how United Way’s 21 & Able Career Transition Project helped Luke, visit bit.ly/2Al2iBx



“This job helps me feel more independent.”

Eric worked various part-time jobs before finding full-time employment at the University of Pittsburgh. He was hired through United Way’s Career Transition Project, a program that embeds a recruiting professional into local businesses to help people with disabilities find competitive employment.

Eric started at Pitt a little over a year ago in the Facilities Management department.

Because of United Way’s Career Transition Project, Eric knows he has someone who can help - Career Transition Professional Tom Armstrong, who works in the Human Resources Department at Pitt. “It’s nice to know he is there and able to answer my questions,” Eric said.

Full-time employment allows Eric to make new friends and work with his peers—something Eric really enjoys. “Everybody has been real nice. I made some friends here,” Eric said. “This job helps me feel more independent.”



Helping To Improve The Lives Of Older Adults And Their Families

We answer the call through initiatives that help older adults meet basic needs, promote healthy living and support caregivers. By mobilizing thousands of caring community volunteers, we prevent seniors from being institutionalized, and provide them support they need to live safely in their own homes with dignity. And our programs also help prevent the negative effect of overwhelming stress on family caregivers of aging parents.

2017 Highlights

68,000



Nearly 2,000 volunteers were mobilized over the last year to address the needs of seniors in our community. 68,000 hours of support were provided including driving seniors to medical appointments, delivering meals, shopping for groceries, doing home safety checks, providing companionship, and more. This vital help supported over 7,500 seniors to live in their communities longer, with dignity and respect.

3,225



Meals on Wheels of Greater Pittsburgh delivered 3,225 meals to seniors who are unable to access food. At the same time, these seniors had on-going monitoring to catch health changes before they became a crisis. As a result, 266 potential hospitalizations were prevented.

3,000+



Five United Way employer partners have committed to supporting their employees who are caring for an older loved one by providing information and help finding resources that will allow their loved ones to meet their basic needs, while decreasing their own stress. As a result, more than 3,000 family caregivers were supported.



Who You Help



“I truly was thinking of ending it.”

What's it like to be so alone that you run out of hope? See how United Way's Open Your Heart to a Senior helped Deanna at bit.ly/2zC3f7w



“Our friendship is so special. I love her like my own.”

Nearly ten years ago, Maryann was flipping through her newspaper when she noticed an article promoting a new program in Westmoreland, Fayette and Greene counties. It was called Faith in Action, now known as United Way's Open Your Heart to a Senior program.

“It said seniors could get help with anything at home or going to doctor visits, so I called. I really needed that. I still need that,” Maryann explained. “It's been a blessing.”

Eventually, Maryann started receiving check-in calls from Open Your Heart to a Senior volunteer Elizabeth, and an incredible friendship began.

For 93-year-old Maryann, their phone calls are something she looks forward to every week. The two discuss the day's happenings, current events, their families, Elizabeth's job and more.

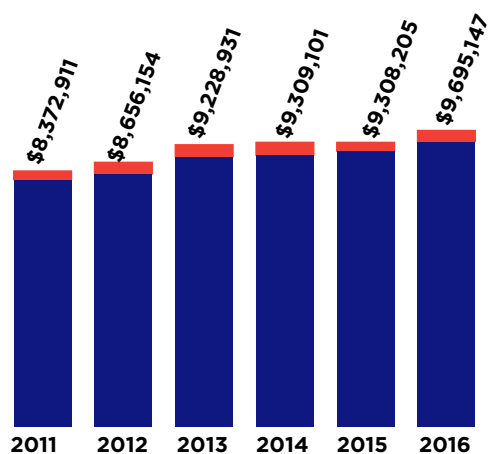
“I can't say enough good things about United Way. The whole organization just does so much for seniors. It's wonderful,” Maryann added.

Leadership Giving, Fueling Our Region's Philanthropic Growth

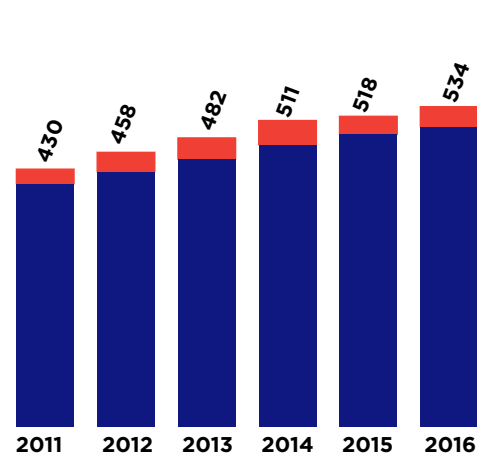
Tocqueville Society

United Way of Southwestern Pennsylvania is fortunate to have one of the largest and most engaged Tocqueville Societies in the country. Tocqueville represents tremendous generosity and philanthropic leadership with gifts of \$10,000 or more. The Tocqueville Society raised over \$9.6 million in the last year to address our communities most pressing issues. It is ranked 9th largest in the country, supporting the needs of the most vulnerable people in our community.

TOCQUEVILLE CONTRIBUTIONS



TOCQUEVILLE MEMBERSHIP



■ Allegheny County ■ Westmoreland County

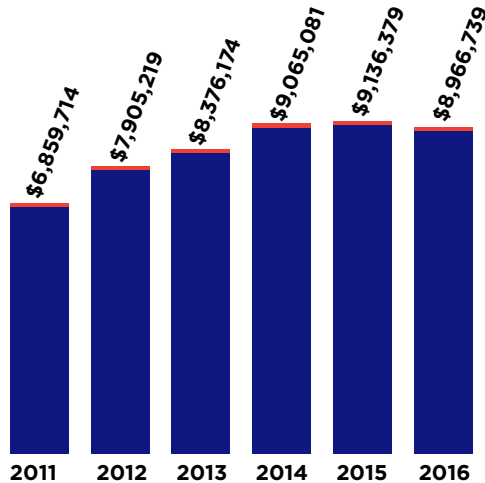


Women's Leadership Council

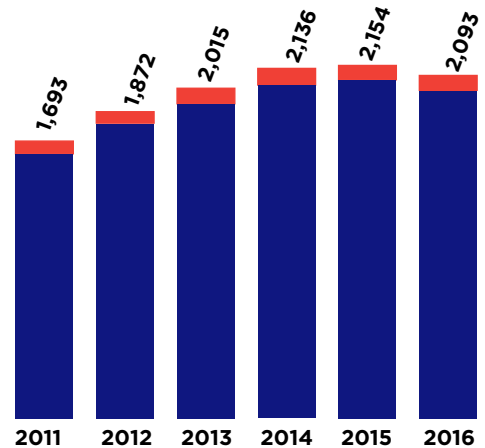
United Way's Women's Leadership Council is a dedicated network of women with talent and passion for making our community stronger. With 2,000 members in Allegheny County and 93 members strong in Westmoreland County, the achievements and philanthropic impact of its membership represents the best of our community. Since 2016, our WLC has been ranked the third largest in the nation in terms of dollars raised.

Why WLC?
View at
bit.ly/2kea6Rx

WLC CONTRIBUTIONS



WLC MEMBERSHIP



■ Allegheny County ■ Westmoreland County



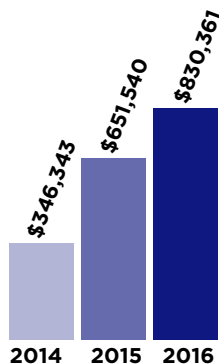
Next Gen

To secure the future of our work for now and generations to come, United Way continues to focus on building understanding and support from the next generation of young leaders. Our Next Generation supporters have grown by 21% in the past year and donations have grown by 27%.

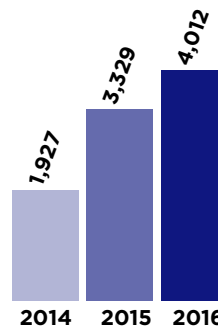
With increased participation in giving, volunteering and lending their voices and expertise to address the needs in our community, United Way's Next Generation support continues to grow.

Want to join other community change-makers? Find out at
bit.ly/2AoniYb

NEXT GEN CONTRIBUTIONS

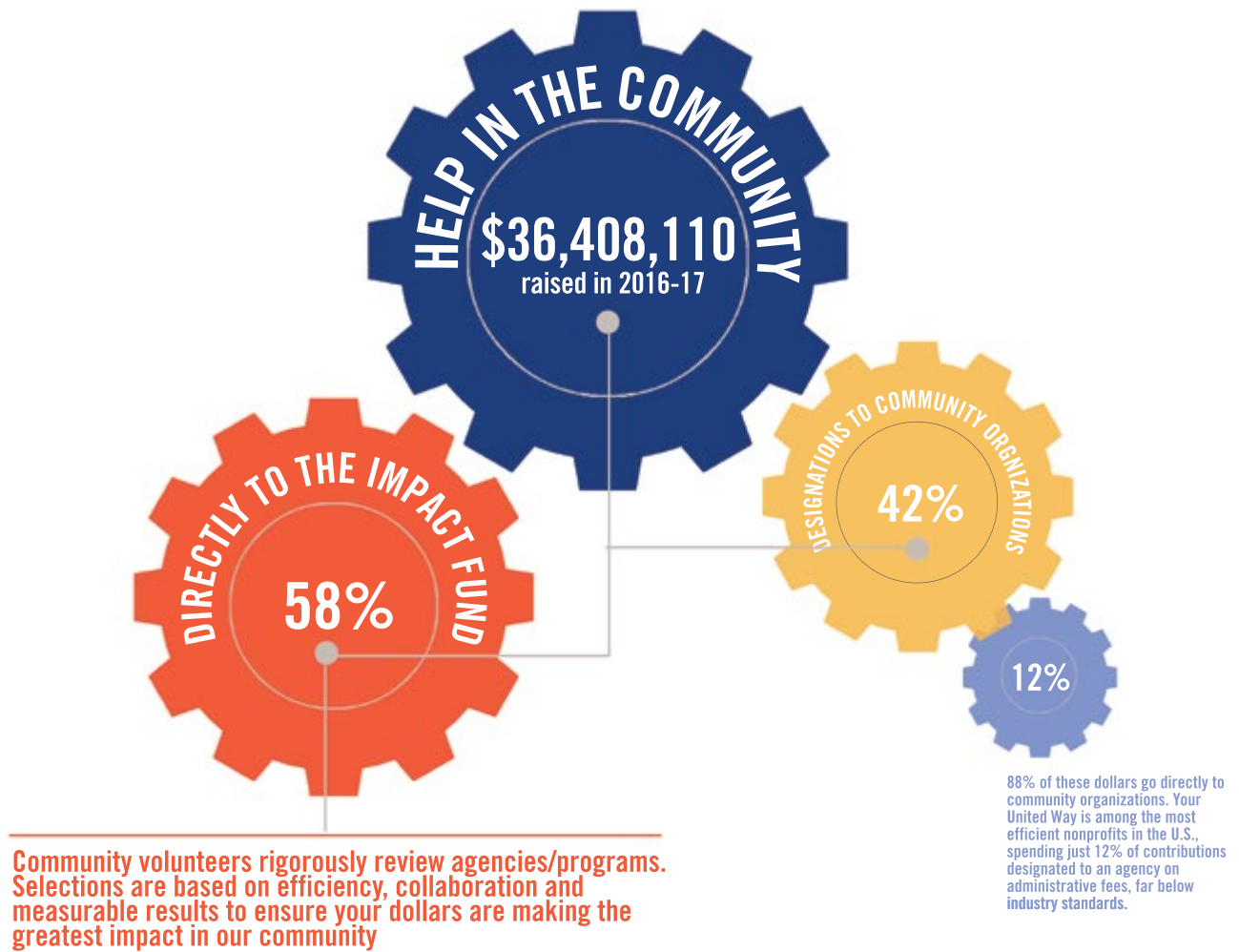


NEXT GEN DONORS

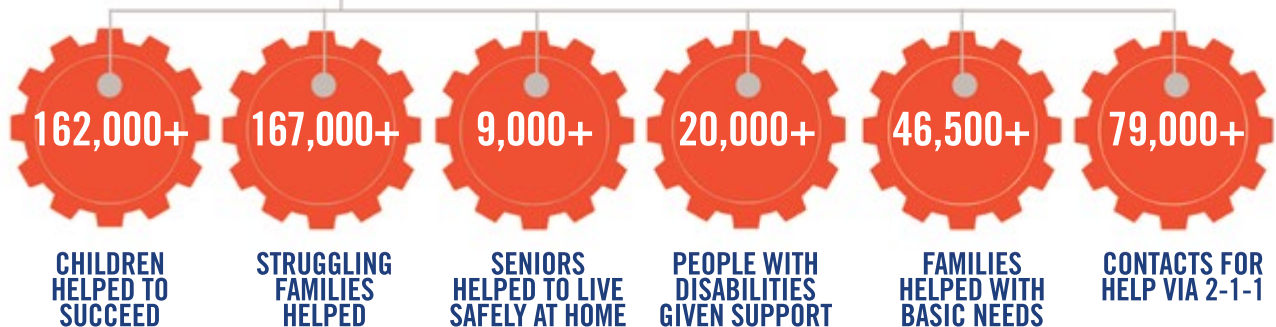


Your United Way At Work

In 2017, the merger to combine United Ways serving Allegheny, Westmoreland, Fayette and southern Armstrong Counties into United Way of Southwestern Pennsylvania celebrated its two-year anniversary. As originally intended, dollars raised locally continue to remain in their local communities, and local community volunteers continue to make decisions about how to best direct funds to help people in need.



HELPING OVER 376,000 PEOPLE IN NEED IN OUR LOCAL COMMUNITY



Demonstrating Strong Financial Stewardship, Accountability, And Transparency



In 2017, United Way of Southwestern PA earned a four-star rating from Charity Navigator for the seventh consecutive year in a row. Only 3% of organizations rated by Charity Navigator have received seven consecutive four-star evaluations, demonstrating sound fiscal management and a commitment to accountability and transparency. See our 990 at bit.ly/2BHIqsO.

Volunteers Making A Difference For Those In Need

Through on-going, relationship based volunteerism, including weekly mentoring of middle school students, helping seniors remain safe in their homes to Free Tax Prep, Corporate Days of Caring and large community volunteer mobilizations, United Way Volunteers improved the lives of thousands of people in need. Between 2016 and 2017, over 11,600 volunteers donated 122,938 hours worth of their time and talent to help 93,000 people in need.

2017 Highlights



169,000

Over 640 volunteers served 40 agencies covering three counties during Westmoreland's Day of Caring. Teams of volunteers worked on various projects including landscaping, mentoring, working with seniors and more. Volunteers completed work on over 60 projects that served 169,000 people in need.



5,720

Over 400 Women's Leadership Council volunteers impacted 5,720 people through projects including assembling literacy kits, serving lunch, collecting clothing and more on the September 27, 2017, WLC Day of Caring.



720

375 young professional volunteers worked with 720 local children to teach them healthy habits and the importance of building strong bodies and minds at United Way's first ever Games For Good community volunteer mobilization. First National Bank was the presenting sponsor of this community day of action at Highmark Stadium.

Foundation Partners Strengthening Our Community

We are grateful for the community, corporate, and family foundations who support the work of United Way of Southwestern Pennsylvania in 2016 - 17.

Allegheny County

United Way/A. J. Spina Endowment Fund of The Pittsburgh Foundation/Community Foundation of Westmoreland County

Arrow International Scholarship Fund of Berks Community Foundation

BNY Mellon Foundation of SWPA

Charles Morris Charitable Trust

Eden Hall Foundation

The Edith L. Trees Charitable Trust

Eleanor D. Merrick Foundation

FISA Foundation

Hillman Foundation

James M. & Lucy K. Schoonmaker Foundation

Jefferson Regional Foundation

Jewish Healthcare Foundation

Massey Charitable Trust

United Way/Maurice Falk Endowment Fund of The Pittsburgh Foundation

McAuley Ministries

Mendel & Sylvia Solomon Charitable Trust through the PNC Charitable Trust Grant Review Committee

Roy A. Hunt Foundation

Siemer Institute for Family Stability

Staunton Farm Foundation

The Buhl Foundation

The David S. & Karen A. Shapira Foundation

The Dietrich Foundation

The Fine Foundation

The Grable Foundation

The Heinz Endowments

The Philadelphia Foundation

The Pittsburgh Foundation

Lois Tack Thompson Fund of The Pittsburgh Foundation

Helen E. Johnston Fund of The Pittsburgh Foundation

The PNC Foundation

Anonymous Foundations

Westmoreland/Fayette/Southern Armstrong Counties

Claude Worthington Benedum Foundation

The Home Depot Foundation

Land O Lakes Foundation

Richard King Mellon Foundation

Early Childhood Education Community

Innovation Zone

Jack Buncher Foundation

Grable Foundation

Westmoreland County AAA

Katherine Mabis McKenna Foundation

Marilyn K. Kiefer Foundation

Paul and Anne Smiy Family Foundation

Community Foundation of Westmoreland

County, Greensburg Foundation Fund

Anonymous Foundation

Answering The Call United Way's Board Of Directors

Throughout 2017, United Way's Board of Directors lead the way by providing strategic decision making and guidance to steer the organization. These leaders brought their passion, professional experience and resources to answer the call for those in need in our community ensuring continued progress and health for the organization and our community.

Karen L. Larrimer* (Board Chair)

The PNC Financial Services
Group, Inc.

Josie Badger, DHCE, CRC

PEAL Center

Leroy M. Ball*

Koppers, Inc.

John A. Barbour*

Buchanan Ingersoll & Rooney

Charlie Batch

Best of the Batch Foundation

Carolyn M. Branthoover, Esq.

K&L Gates

Brooks Broadhurst*

Eat'n Park Hospitality
Group, Inc.

Christine A. Bryant

Covestro, LLC

Raymond W. Buehler, Jr.*

Schneider Downs

Christopher H. Chamberlain

Novum Pharmaceutical
Research

Leslie C. Davis

UPMC

Tracy J. DeCock

PNC Bank

Patrick J. DeCourcy

Allegheny Technologies
Incorporated

Leon F. DeJulius, Jr.

Jones Day

Vincent J. Delie, Jr.

F.N.B. Corporation

Robert A. DeMichiei*

UPMC

Michael R. Denove, CPA

EY

Michael Dunleavy

IBEW Local Union No. 5

Annie Hanna Engel, Esq.

Howard Hanna
Insurance Services

Michele Fabrizi

MARC USA

Karen Wolk Feinstein, Ph.D.*

Jewish Healthcare Foundation

Kim Tillotson Fleming

Hefren-Tillotson, Inc.

Patrick D. Gallagher, Ph.D

University of Pittsburgh

Stephanie L. Garbe

The PNC Financial Services
Group, Inc.

Kelly R. Gray

FedEx Ground

Rev. Glenn G. Grayson, Sr.

Center That CARES

Gretchen R. Haggerty*

Community Leader

Cynthia Hundorfean

Allegheny Health Network

Donald "Blue" Jenkins

EQT Corporation

Laura S. Karet

Giant Eagle, Inc.

John P. Kline+

S&T Bank

Elizabeth E. Krisher, CPA*+

Maher Duessel Certified
Public Accountants

Robert A. Krizner

KPMG, LLP

Gerald F. MacCleary*

Covestro LLC

Henry J. Maier

FedEx Ground

David J. Malone*

Gateway Financial Group

Robert W. McCutcheon*

PwC

James W. McGill
Eaton Corporation

Linda L. Moss+
FirstEnergy

James E. Morrison*+
Community Volunteer

Morgan K. O'Brien*
Peoples Natural Gas

Rich Riazzi
Duquesne Light

Deborah L. Rice-Johnson*
Highmark Health

Mary D. Richter, CPA
Schneider Downs

Shawn Robinson
EQT Corporation

Robert J. Rogalski+
Excela Health

Arthur J. Rooney II*
Pittsburgh Steelers Sports, Inc.

Catherine ("Casey") Ryan
Reed Smith, LLP

James E. Scheel
Williams

James R. Segerdahl
K&L Gates

Viktor R. Sekmakas
PPG

Dmitri D. Shiry, CPA*
Deloitte LLP

Wendy Etheridge Smith, PhD
Higher Achievement Pittsburgh

Jerry Thompson
MARC USA

Charles G. Urtin*+
S&T Bank

Thomas L. VanKirk
Highmark Health

**The Honorable
Dwayne D. Woodruff**
Court of Common Pleas
of Allegheny County

Most Reverend David A. Zubik*
Diocese of Pittsburgh

* Executive Committee Member
+ Westmoreland Representative

Westmoreland/Fayette/S. Armstrong Local Operating Board

James E. Morrison
Community Volunteer

Charles G. Urtin
S&T Bank

John P. Kline
S&T Bank

Elizabeth E. Krisher, CPA
Maher Duessel
Certified Public Accountants

Bobbi Watt Geer, Ph.D.
United Way of Southwestern
Pennsylvania

Tim Bell
UPS Mid Atlantic District

Bibiana Boerio
Community Volunteer

Mayor Robert Brooks
Municipality of Murrysville

Dr. Robert Clemens
Kennametal Inc.

Stephanie DeMaro
Penn State Outreach and Online
Education

David Ebersole
Westinghouse Electric

Karl E. Eisaman
McDowell Associates Inc.

Rhonda Garrett
Express Scripts

Alex Gebrosky
West Penn Power - Latrobe SC

Laura Livingston
Westinghouse Electric Company

Lyzona Marshall, MBA
Seton Hill University

Chad A. McCutcheon, MA
McCutcheon Enterprises, Inc.

Mark E. Myers
West Penn Power

Albert J. Novak Jr.
Excela Health

Ronald H. Ott, MPH
Community Volunteer

Paul Puleo
First National Bank of PA

Denice Robinson
BPU Investment
Management, Inc.

Faye Rosatti
Community Volunteer

Dr. Tuesday Stanley
Westmoreland County
Community College

Meeting The Need United Way's Impact Fund Agencies

Allegheny County Partner Agencies

A+ Schools with Pittsburgh Public Schools

ACHIEVA with Autism Connection, PA Health Law Project, PA Office of Vocational Rehabilitation, NAMI of SWPA, AHEDD

ACTION-Housing with Rebuilding Together Pittsburgh, Nazareth Housing Services and The Pittsburgh Project

American Red Cross, SWPA Chapter

Bethlehem Haven with Pittsburgh Mercy Health Systems and Area Agency on Aging

Boy Scouts of America, Laurel Highlands Council with Family Resources, Boys & Girls Clubs, Propel Schools, YMCA, and others

Boys and Girls Clubs of WPA with Family Resources of Western PA and several school districts

Catholic Charities, Diocese of Pittsburgh with YWCA, Advantage Credit Counseling and Allegheny Intermediate Unit

Community Human Services Corp. with University of Pittsburgh Schools of Social Work and Nursing, Allegheny County Dept. of Human Services and Institute on Disabilities at Temple University, North Hills Community Outreach, SpotLaunch LLC, DHS Office of Community Services and Veterans Leadership Program

Community Kitchen Pittsburgh with Greater Pittsburgh Community Food Bank and Pittsburgh Mercy Health System

Greater Pittsburgh Community Food Bank

Higher Achievement with Center That Cares Schenley Heights Community Development Program and Thelma Lovette YMCA

Holy Family Institute with Mentoring Partnership and Amachi Pittsburgh

Homewood Children's Village with Higher Achievement Pittsburgh and Pittsburgh Public Schools

Hosanna Industries with Eaton Corporation and Peoples Gas

Human Services Center Corporation with Woodland Hills School District

Jewish Community Center with Jewish Association on Aging and Jewish Family & Children's Services

Jewish Family & Children's Service with PPS CITY Connections, Office of Vocational Rehabilitation, Carnegie Library, Jeremiah's Place, North Hills Community Outreach, Point Park University, Duquesne University, Autism Connection of PA and South Hills Interfaith Movement

Just Harvest Education Fund with The Mayor's Office and Housing Authority City of Pittsburgh

KidsVoice with FedEx, K&L Gates and Allegheny County Dept. of Human Services

Macedonia FACE with Higher Achievement, Pittsburgh Public Schools and Oakland Planning and Development Corp.

Mon Valley Initiative with NeighborWorks W PA, Pitcairn Circles and Rainbow Kitchen

Neighborhood Learning Alliance with Bloomfield-Garfield Corporation, Pittsburgh Public Schools and Thelma Lovette YMCA

Northern Area Multi-Service Center with ACCESS Transportation, Inc., Eastern Area Adult Services, LifeSpan, Catholic Youth Association, Plum Senior Community Center, Hill House Association, Riverview Community Action Corp, The Thorne Group, Inc. University of Pittsburgh, School of Public Health

North Hills Community Outreach

Salvation Army of WPA

South Hills Interfaith Ministries with North Hills Community Outreach, Jewish Family and Children's Service and Focus on Renewal

Travelers Aid Society with Womanspace East and Women's Center & Shelter, ACCESS Transportation, Wesley Family Services, North Hills Community Outreach, UPMC Senior Services and Western Pa Community of Hope

Urban League of Greater Pittsburgh with Community College of Allegheny County

Veterans Leadership Program with VA Pittsburgh Healthcare System, Allegheny County Dept. of Human Services, Eat n' Park, Giant Eagle, West Penn Hospital, ACTION Housing, Smallman Galley, Team Red, White and Blue, Mission Continues and Disabled American Veterans

Vintage with Community College of Allegheny County and Jefferson Regional Foundation

Wesley Family Services with North Hills Community Outreach, AgeWell, Travelers Aid, University of Pittsburgh (Occupational Therapy program), Chatham University (Physical Therapy Program) and Brightwood Career Institute (Occupational Therapy Assistant program)

Women's Center & Shelter with Allegheny County Department of Human Services and Community Human Services

YMCA of Greater Pittsburgh with YWCA, Carnegie Science Center and Chatham University

YWCA of Greater Pittsburgh with Neighborhood Legal Services and PA Women Work

IMPACT FUND supported United Way Community Initiative Partners:

Allies for Children

Big Brothers Big Sisters

Blind and Vision Rehabilitation Services

Communities in Schools

Consortium for Public Education

Jewish Federation of Greater Pittsburgh

Mt. Arat Community Activity Center

Pittsburgh Association for the Education of Young Children

Program to Aid Citizen Enterprise

Reading is Fundamental

YouthPlaces

Westmoreland/Fayette/Southern Armstrong Counties

American Red Cross of Chestnut Ridge

Big Brothers Big Sisters of the Laurel Region

Blackburn Center Against Domestic & Sexual Violence

CASA of Westmoreland, Inc.

Catholic Charities of the Diocese of Greensburg, PA

Center for Hearing & Deaf Services, Inc.- Westmoreland

Connect, Inc. - Welcome Home Shelter

Crime Victims Center of Fayette County

Domestic Violence Services of Southwestern PA

Family Services of Western PA

Fayette County Community Action Agency, Inc.

Greensburg YMCA

HAVIN Inc. (Helping All Victims In Need)

Interfaith Volunteer Caregivers of Fayette, Inc.

Laurel Area Interfaith Volunteer Caregivers, Inc. Faith in Action

Peoples Library - New Kensington

Sewickley Township Public Library

The Arc of Westmoreland

Union Mission

Valley Points Family YMCA

Wesley Health Center, Inc.

Westmoreland Community Action

Westmoreland County Food Bank, Inc.

YWCA of Westmoreland County

Top 100 Campaigns Championing Our Work

The companies and organizations listed below have driven our ability to grow fundraising results that have allowed us to ensure that local people in need gain access to help and support to improve their lives. We are grateful for their commitment to our community.

Allegheny County

Million Dollar Club:

UPMC

The PNC Financial Services Group, Inc.

HIGHMARK Health

FedEx

PPG

Allegheny Technologies Incorporated

Peoples Natural Gas Company

Giant Eagle

University of Pittsburgh

Duquesne Light

EQT Corporation

Covestro LLC

Deloitte LLP

Pittsburgh Steelers Sports, Inc.

Hefren-Tillotson, Inc.

Eaton Corporation

PwC

K & L Gates LLP

Buchanan Ingersoll & Rooney PC

Federated Investors, Inc.

Reed Smith LLP

Williams

Eat'n Park Hospitality Group, Inc.

KPMG LLP

Wabtec Corporation

United States Steel Corporation

Bayer

BNY Mellon

Naval Nuclear Laboratory

EY

NOVA Chemicals Inc.

Northwestern Mutual

United Parcel Service

Dollar Bank

Schneider Downs and Co., Inc.

Enterprise Rent-A-Car Company

KeyBank

United States Steel Corporation - Retirees

Port Authority of Allegheny County

Koppers Inc.

Curtiss-Wright

Duquesne University

Cohen & Grigsby PC

First National Bank of Pennsylvania

Bechtel Plant Machinery, Inc.

Kraft Heinz Co.

Calgon Carbon Corporation

Gateway Health Plan

Carnegie Mellon University

Comcast Family of Companies

Aetna

Matthews International Corporation

Jones Day

United Way of Southwestern PA

**United Steelworkers
Henderson Brothers, Inc.
P. J. Dick, Inc.
Clark Hill PLC
MARC USA
LANXESS Corporation
AT&T Inc.
Cabot Oil & Gas Corporation
Oxford Development Company
Novum Pharmaceutical Research Services
Eckert Seamans Cherin & Mellott LLC
Wells Fargo Bank
Fox Rothschild LLP
Glimcher Group, Inc.
American Airlines, Inc.
Citizens Bank of Pennsylvania
Electrical Workers and Employers of
 IBEW Local #5
U.S. Bancorp
Louis F. Leeper Company
Alcoa-Retirees
Goldberg Persky & White PC**

**Macy's
City of Pittsburgh
Gateway Financial Group, Inc.
Bombardier Transportation
Erie Insurance Group
The Travelers Companies, Inc.
Pittsburgh Corning Corporation
Tucker Arensberg, P.C.
Robert Morris University
ThermoFisher Scientific
Pittsburgh Post Gazette
Hillman Company
Emerson Power & Water Solutions, Inc.
Carmeuse North America
Bank of America
L. B. Foster Company
Allegheny Conference on Community
 Development
Axiall Corporation
Fifth Third Bank
Valspar Corporation
Alcoa, Inc.**

Westmoreland/Fayette/Southern Armstrong Counties (Top 20)

**Kennametal Inc.
West Penn Power
UPS
Carpenter - Latrobe Specialty Metals
Elliott Company
ABB
Excela Health
Westinghouse Electric
Giant Eagle
Erie Insurance**

**First National Bank
Express Scripts
Williams
S&T Bank
Powerex
Columbia Gas
Peoples Natural Gas
Adelphoi USA
First Commonwealth Bank
MSA**

Corporate Gifts Support the Impact Fund

These companies and organizations are recognized for supporting United Way's Impact Fund or key initiatives with 50% or more of their corporate contribution*. In doing so, they demonstrate a commitment to supporting the highest performing agency partners who are addressing our community's most critical issues with long-term solutions.

Allegheny County

Allegheny Technologies Incorporated

Bayer

BNY Mellon

Cabot Oil & Gas Corporation

Calgon Carbon Corporation

County of Allegheny

Covestro LLC

Curtiss-Wright

Dollar Bank

Duquesne Light

Eat'n Park Hospitality, Inc.

Eaton Corporation

Electrical Workers and Employers of IBEW Local #5

Enterprise Rent-A-Car Company

Federated Investors, Inc.

FedEx

First National Bank

FirstEnergy

Giant Eagle

Hefren-Tillotson, Inc.

Highmark Health

KeyBank

Koppers Inc.

Kraft Heinz Co.

LANXESS Corporation

Matthews International Corporation

NOVA Chemicals Inc.

P. J. Dick, Inc.

Peoples Natural Gas Company

Pittsburgh Penguins

Pittsburgh Steelers Sports, Inc.

The PNC Financial Services Group, Inc.

PPG

United Steelworkers

University of Pittsburgh

UPMC

Williams

Westmoreland/Fayette/Southern Armstrong Counties

Carpenter - Latrobe Specialty Metals

Kennametal

West Penn Power

UPS

*Corporate gifts starting at \$25,000 and above



United Way of
Southwestern Pennsylvania

United Way of Southwestern Pennsylvania
1250 Penn Avenue | Pittsburgh, PA 15222 | 412-261-6010

uwsdpa.org