



AN INTRODUCTION TO BRIDGES SOCIETY

Extending an invitation to lead.



United Way of
Southwestern Pennsylvania



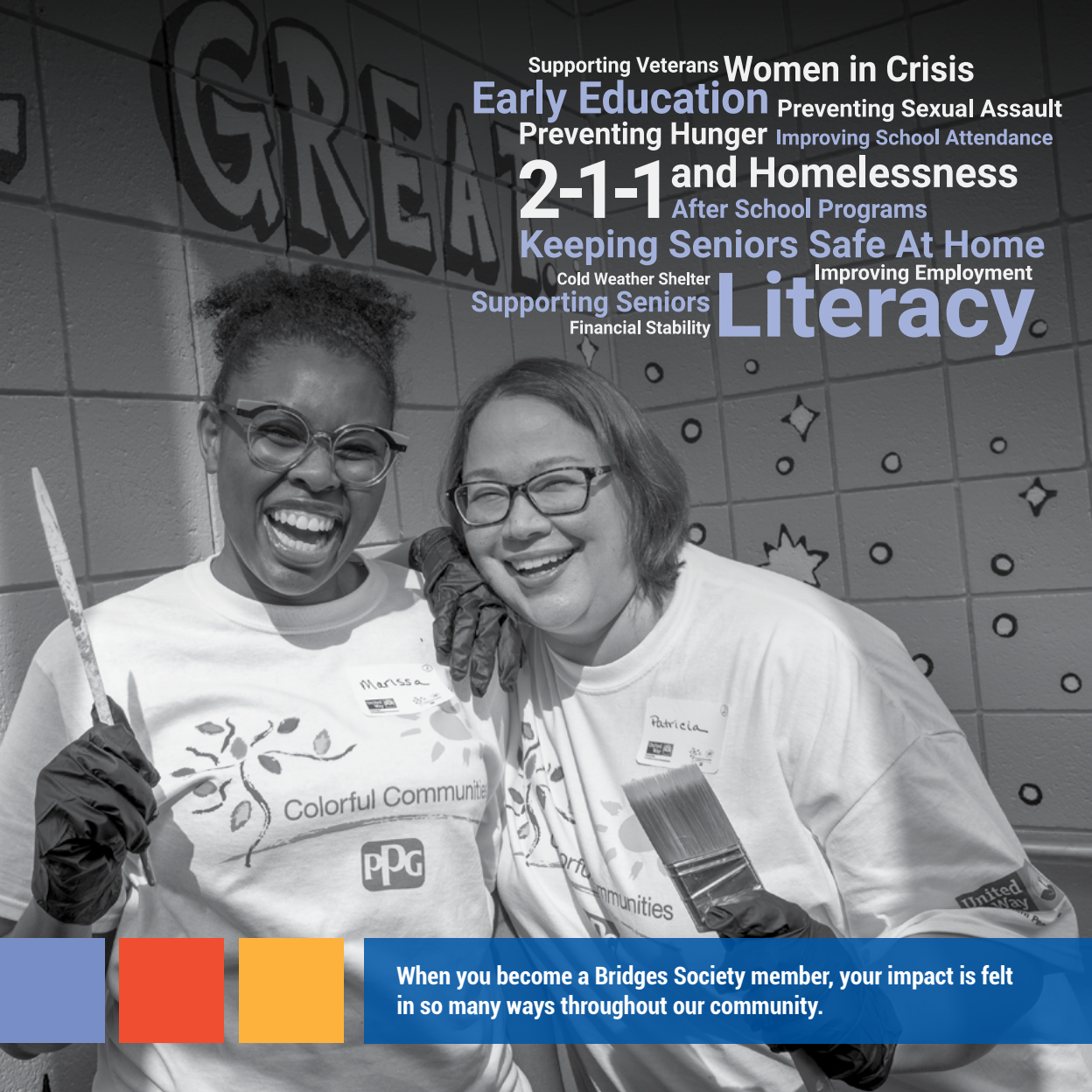
BRIDGES SOCIETY

Leadership isn't being out in front of everyone; it's making others better as a result of your presence.

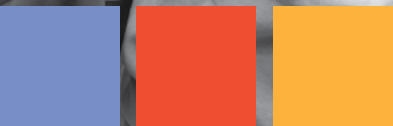
You'll find no better example of the positive power of leadership than United Way of Southwestern Pennsylvania. Over the past century, United Way has built meaningful relationships among public and private leadership, the business community, volunteers, philanthropists and human-service agencies.

Now we're extending an invitation for you to become a member of Bridges Society. You'll join other equally passionate young professionals who are invested in making real change for our most vulnerable neighbors.

This is a once-in-a-career opportunity for you not only to be involved, but to truly lead the way forward.



Supporting Veterans **Women in Crisis**
Early Education Preventing Sexual Assault
Preventing Hunger Improving School Attendance
2-1-1 and Homelessness
After School Programs
Keeping Seniors Safe At Home
Cold Weather Shelter Improving Employment
Supporting Seniors
Financial Stability **Literacy**



When you become a Bridges Society member, your impact is felt in so many ways throughout our community.



IMPACTING OUR COMMUNITY WITH CONFIDENCE AND ACTION.

Before you invest your hard-earned money and valuable time, it's important for you to be confident in the impact they'll have. When you give to United Way, your generosity goes farther because the benefits stay right here – in the neighborhoods and households of Southwestern Pennsylvania.

United Way funds and works closely with a select group of human service agencies throughout five counties in Southwestern Pennsylvania. These agencies go through a thorough vetting process to ensure every dollar works as hard as possible for those most in need.

Who shapes these priorities? As a member of Bridges Society, you do.





A BOLD COMMITMENT TO LEAD.

Membership in Bridges Society is extended to young professionals under the age of 45 who commit to donating at least \$1,000 annually to United Way.

Yes, it's a significant commitment. But there may be no better investment in both your community and your professional career. You'll be part of a growing group of like-minded people at a similar point in their career – ready to help lead our community forward in a spirit of shared responsibility and humanity.

Bridges Society members enjoy great benefits including:

- Exclusive local networking events with community-minded professionals.
- Valuable professional and personal development.
- Opportunities to serve in leadership roles for United Way initiatives.
- Participation in high-impact volunteer events.
- Meet and interact with CEOs in situations where you can demonstrate your leadership skills.
- Work side-by-side with influential community and civic leaders.

Raise your personal profile. Push your comfort zone. Elevate the quality of life for our entire region.



\$1000=

Joining Bridges Society is a significant commitment. But consider the enormous impact your donation can make on so many lives.

- 400 books to help at-risk students improve reading skills.
- Food and shelter for 20 families in crisis.
- An hour of in-home support for 50 older individuals hoping to avoid living in a nursing home.

Start now, then step-up your giving.

New members have an opportunity to join Bridges Society and receive benefits now while they gradually ramp-up their donations to the \$1,000 minimum level. You can start with an annual gift of \$500, then step that up over the next 5 years.





The time is now to create a better tomorrow.

Are you ready to be the type of leader our community needs? Get started by visiting uwsdpa.org/next-generation or contact us via email:

In Allegheny County
nextgen@unitedwayswpa.org

In Butler County
sherrie.dunlapgallagher@unitedwayswpa.org

In Westmoreland County
kelli.belanger@unitedwayswpa.org

Now is your time to lead the way.

UWSWPA.ORG/NEXT-GENERATION



United Way of
Southwestern Pennsylvania