

Thanks to you, working families are getting help meeting basic needs.

Your contributions help your neighbors move from surviving to thriving.

More than 350,000 households in our region are unable to afford housing, child care, food, transportation, health care and technology.

ALICE stands for “asset limited, income-constrained, employed” and refers to household working, sometimes two or more jobs, but cannot make ends meet.

A L I C E
ASSET
LIMITED,
INCOME-
CONSTRAINED
EMPLOYED

Federal Poverty Level: \$15,500 for individuals.
\$31,200 for family of four with two children in child care.

ALICE (PA): \$28,116 for individuals. \$88,896 for family of four with two children in child care.

37% ALICE

BUTLER

43% ALICE

ARMSTRONG

ALLEGHENY

41% ALICE

WESTMORELAND

38% ALICE

FAYETTE

50% ALICE

Graphic shows ALICE + FPL in each county. Source: ALICE in the Crossroads (2024).

When you give to United Way, you support agencies that uplift working families.



SCAN TO LEARN MORE



unitedwayswpa.org

United Way of Southwestern Pennsylvania

Invest in a brighter future for all.

When you give to United Way, you are helping support nonprofits that provide job training and help people fulfill their potential.



A student at New Century Careers is learning skills he needs to get a good-paying job.

Your workplace campaign contributions support agencies, where individuals learn skills that lead to the pride and confidence that comes from good-paying jobs.



SCAN TO LEARN MORE



unitedwayswpa.org

United Way of
Southwestern Pennsylvania

All young people deserve a positive start.

When you give to United Way, you are helping support nonprofits that help children and youth build for success in school and life.



Nonprofits like Latino Community Center help young families build for success in school and life.

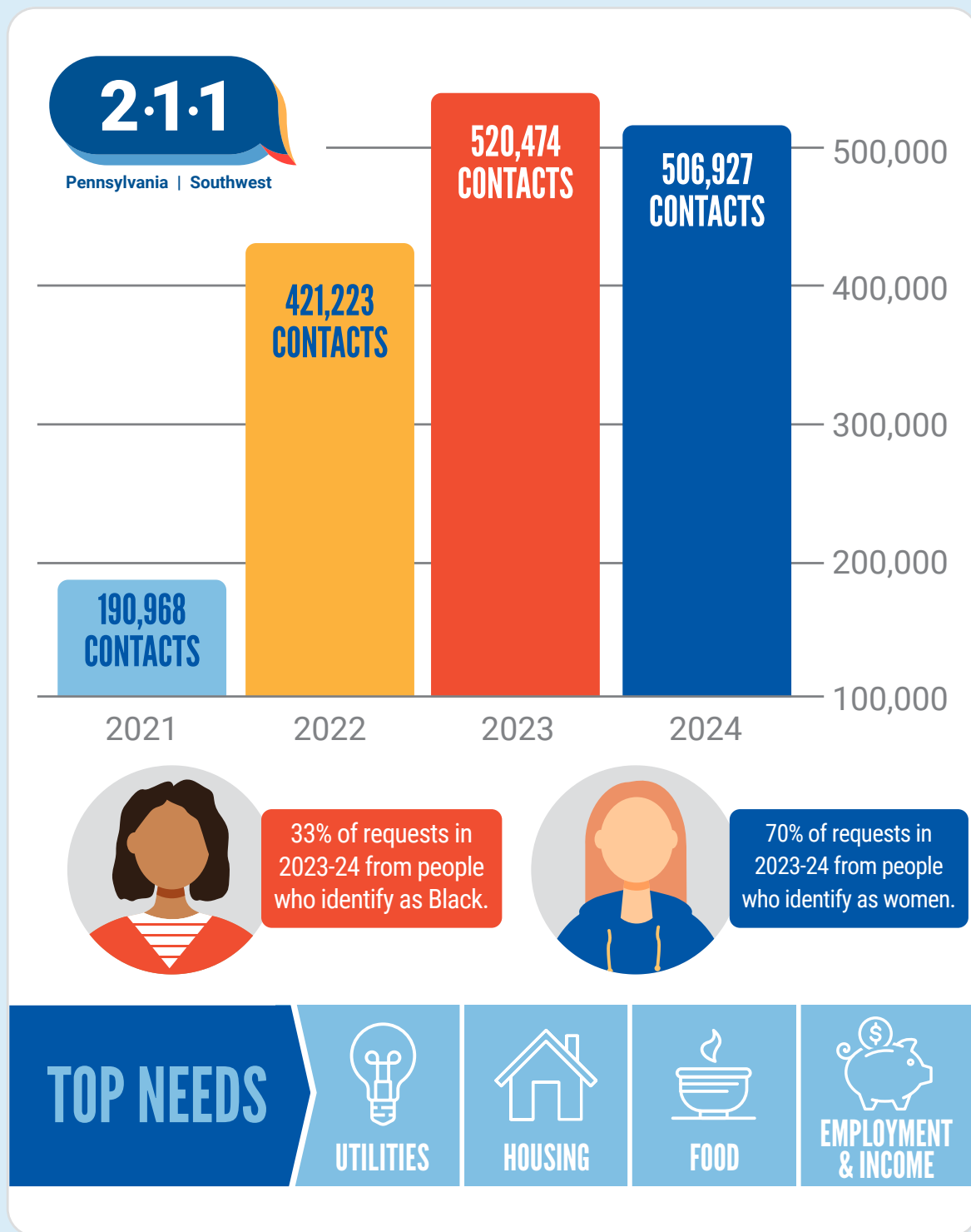
Your workplace campaign contributions make it possible for agencies to help young families get the support they need to succeed, fulfill their dreams and establish careers and community in western Pennsylvania.



unitedwayswpa.org

United Way of
Southwestern Pennsylvania

211 answered the call for 507,000 people last year.



Your workplace contributions support United Way's 211 helpline—available 24 hours a day, seven days a week year-round—to connect people to vital human services assistance. You can also refer a loved one to get help.



unitedwayswpa.org

United Way of
Southwestern Pennsylvania

Thanks to you, everyone will have enough to eat.

Healthy and nutritious food is the foundation of well-being.

When you give to United way, you are support nonprofits dedicated to making sure all families are fueled for success.



United Way's Impact Fund supports community meal packing drives and nonprofits that work to address food security.

Your workplace campaign contributions make it possible for partner agencies to do the critical work of ensuring that everyone in our region has access to ample fresh, healthy food and alleviate worries about food security.



SCAN TO LEARN MORE



unitedwayswpa.org

United Way of
Southwestern Pennsylvania

United Way volunteers go the extra mile.

With so many volunteer opportunities, giving back through United Way of Southwestern Pennsylvania can take you down many paths. Help get new bikes into the hands of children. Brighten the day of a senior who is living independently. Or participate in a poverty simulation that helps illuminate the challenges too many of our neighbors face every day.



Thanks to volunteers like you, more than 2,000 children have received bikes through our annual Build-A-Bike events.

Your workplace campaign contributions support volunteer engagements that make a huge difference in the lives of people of all ages across our region. Ask your company's campaign contact person how you can engage.



SCAN TO LEARN MORE



unitedwayswpa.org

United Way of
Southwestern Pennsylvania